

# THE STATE REVENUE NEWSLETTER

Editorial Office  
THE STATE REVENUE SOCIETY  
144 Urbana Lane  
Lincoln, Nebraska 68505

Volume 3, Number 6

September 1968

Whole Number 78

## QUESTIONS AND ANSWERS (MOSTLY QUESTIONS)

UTAH GROUSE - Were these actually used? If so, what years? Mr. Zimmerli shows us what appear to be specimens. The one on the left is without background; the right illustration is in brown on an orange background. This is a \$3 stamp, dated 1962.



WHAT STATE ISSUED A DOVE STAMP?- The copy shown us by Mr. Soderling is in black on a grey background which seems to have been printed in a separate operation as it is shifted relative to the frame. This \$1 stamp, dated 1964-65, is perf 11 $\frac{1}{2}$ .



WHO ISSUED A FROG STAMP?- This we can answer from Van's Handbook though it was not mentioned in the text. The California Sport Fishing License Validating Stamps are inscribed "Valid in ocean waters and for taking frogs". See the November 1967 Newsletter.

IS THERE A CROW STAMP? - Yes, there is! A 50¢ stamp with a beautiful picture of a crow (if a crow can be beautiful) is illustrated and described in the September 1965 American Revenuer. Although inscribed "NO. DAK. GAME & FISH DEPARTMENT", North Dakota officials seem to know nothing about it. It is dated 1945.

NEW YORK STOCK TRANSFER - A few years ago we were advised that these could not be sold to collectors; also that it was illegal to remove used ones from documents. State revenue collectors can rest easier now. According to Terry Hines, unused stamps may be purchased at face value from Bank of New York, Tax Stamp Section, 20 Broad St., New York, N. Y. 10005. The following denominations are available: 1¢, 2, 4, 5, 8, 10, 20, 40, 50, 80¢, \$1, 2, 3, 4, 10, 20, 40, 100, and \$100. The 1¢-20¢ are from the 1945 series with the exception of the 8¢ which is ST130 of 1932-39. We would assume that other values are from whatever is the most recent issue for a particular denomination.

NEW YORK BEDDING stamps were discontinued in 1954 and New York now requires that a bedding license be obtained by manufacturers. Terry Hines reports BE4, which is printed in blue, with a red plate number, AU17700 to be exact. Your editor has this also, but with a different number. Might this be a sheet, rather than plate, number. One would not expect to find red plate numbers on blue stamps, though anything is possible in revenues!

STATE REVENUE NEWSLETTER  
official organ of  
THE STATE REVENUE SOCIETY

Published bimonthly. Dues \$2/year.

President: Elbert S. A. Hubbard  
Secretary-Treasurer: David C. Strock  
Managing Editor: Kenneth Pruess  
Assistant Editors:  
Charles H. Hermann (Cataloging)  
E. L. Vanderford (Fish & Game)

SECRETARY'S REPORT - The list of new members must be held over to November.

CHANGE OF ADDRESS:

#63 Morse, Russell A. Jr.  
6504 Field Street  
Arvada, Colorado 80002

MISSOURI TROUT - This stamp will go on sale about Dec. 20, 1963 and advance information sent by Edwin Blum indicates it should be an attractive one. It is designed by Charles Schwartz, a wildlife artist of national renown. Other details are not available except that it will have a value of \$3.30 and requests can be sent to Fiscal Section, Department of Conservation, North Ten Mile Drive, Jefferson City, Missouri 65101.

SAN LUIS OBISPO COUNTY (CALIFORNIA) - Obsolete real estate stamps are sold at face value plus a return stamped envelope. All values through the \$110 denomination are available. Order from the County Recorder, Room 317, Court House, San Luis Obispo, Calif. 93401. These are different from most of the California County stamps in that the year "1963" is printed in red below "County".

ILLUSTRATIONS - If necessary to preserve fine detail, we can do a good job with black and white photographic enlargements. These must be prepared by the contributor. It is necessary that they be high contrast (no shades of gray) on single weight paper.

MICHIGAN FISHING STAMPS - M. Mack Earle sent us a copy of the 1963 rules for fishing in Michigan which illustrates the stamps in current use. We believe a copy can be obtained free from the address shown.

1968  
**Rules for  
FISHING  
in Michigan**



DEPARTMENT OF CONSERVATION

Lansing, Mich. 48926

NEXT ISSUE - Lots of catalog addenda, we hope; More Pennsylvania local real estate; Story of design of first North Dakota Mule Deer Stamp; new issue news.

KANSAS

Quail Hunting Stamps

First issued for 1937-38 season and as such are the first State hunting or fishing stamps of record. All stamps 1937-38 through 1961-62, which latter were prepared but not issued, were of uniform 32 x 26½ mm design picturing a Bob White quail superposed on a map of Kansas. All issues were without serial numbers.

Printing and Pane Detail

- (1) Panes of 50 (5 x 10) issued for 1937-38 and 1938-39 only measure 167 x 306 mm including 13 mm selvage at top. Roul 6 3/4 between stamps and at top selvage. Imperf at sides and bottom.
- (2) Panes of 10 (2 x 5) measure 76 x 160 mm. Roul 6 3/4 between stamps and imperf all four sides.
- (3) Single stamp panes from booklets of 25 measure 47 x 30 mm including 12 mm tab at left. Roul 6 3/4 between stamp and tab. Imperf other three sides. (Note: some single stamp panes were cut from sheets or panes already rouletted and traces of this rouletting occasionally remain on the stamp.)

Constant Varieties

The original 100 subject printing plate was used for the entire life of these stamps and several plate defects appeared as wear developed. See notes and illustrations following year listings for description of most notable of these.



All stamps are on white paper and roul 6 3/4. Frame color is first listed below followed by Quail and date color.

1937-38 50¢ green and brown. From panes of 50.

1938-39 50¢ red and black. From panes of 50.

1939-40 50¢ blue and black. From panes of 10.

50¢, same except from single stamp panes.



Quail Hunting Stamps

- 1940-41 50¢ deep yellow and brown. From single stamp panes.
- 1941-42 50¢ yellow and red. From single stamp panes.
- 1942-43 50¢ green and brown. From single stamp panes.
- 1943-44 50¢ blue and brown. From single stamp panes.
- 1944-45 50¢ purple and brown. From single stamp panes.
- 1945-46 50¢ olive green and brown. From panes of 10.  
50¢, same except from single stamp panes.
- 1946-47 50¢ pink and brown. From panes of 10.  
50¢, same except from single stamp panes.
- 1947-48 50¢ deep blue and red. From panes of 10.
- 1948-49 50¢ magenta and yellow. From panes of 10.
- 1949-50 50¢ brown and gray. From panes of 10.
- 1950-51 50¢ red and green. From panes of 10.
- 1951-52 50¢ green and red. From panes of 10.
- 1952-53 50¢ brown and green. From panes of 10.
- 1953-54 50¢ dark brown and brown. From panes of 10.
- 1954-55 50¢ yellow and green. From panes of 10.
- 1955-56 50¢ green and black. From panes of 10.
- 1956-57 50¢ pink and black. From panes of 10.
- 1957-58 50¢ yellow and black. From panes of 10.
- 1958-59 50¢ brown and red. From panes of 10.
- 1959-60 50¢ yellow and brown. From panes of 10.
- 1960-61 50¢ green and brown. From panes of 10.
- 1961-62 50¢ red and black. From panes of 10. (Prepared but not issued)

The 1961-62 stamps were ordered and printed in the usual manner but prior to opening of the hunting season the law requiring the \$1.00 Upland Game Bird stamp to hunt quail, pheasant or prairie chicken was passed and the quail stamps were not issued. The Fish and Game Office at Pratt did, however, retain a supply of these stamps which were available to collectors at face value.

Quail Hunting StampsConstant Varieties

The three most conspicuous are listed below. Many others of a more minor nature exist.



(1)



(2)



(3)

- (1) "White Feather": A perfectly formed white feather approximately 5 mm long extending upward from lower border of map toward quail's breast. Appears on 1933-39 printing and all thereafter. This Plate defect is stamp #23 in sheet of 100 (before cutting into panes) and is position #5 in pane of 10.

- (2) "Spur" or "Horn": Appears as a large deformity with two horns at quail's right leg knee joint. Had appeared by at least 1952-53 issue. This stamp is position #3 in pane of 10.

- (3) "Defective Top Right Value Tablet": Top right line of circle broken and blob of color covers the "¢" of "50¢". Had appeared by at least 1943-49 issue and became progressively larger with subsequent printings. This stamp is position #3 in pane of 10.

Upland Game Bird Hunting Stamps

Required to hunt all Upland Game Birds. First issued in 1961 and supersedes the 50¢ quail hunting stamp. All issues 1961 through 1963 are from panes of 10 (2 x 5). 1961 panes are imperforate all four sides and 1962 panes believed to be the same. 1963 through 1963 panes are imperforate both sides and bottom; believed to have rouletted tab at top. All issues 1961 through 1963 are rouled 6 3/4.

Upland Game Bird Hunting Stamps

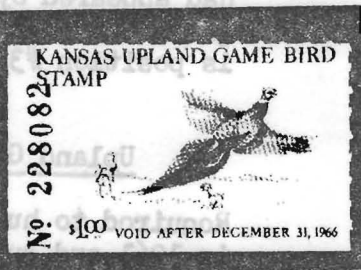
1961 \$1.00 brown on deep yellow. Cock and hen pheasant. Design size  $44\frac{1}{2}$  x 23 mm. No serial number.

1962 \$1.00 brown on light yellow. Prairie chickens. Design size  $44\frac{1}{2}$  x 23 mm. No serial number.



1963 \$1.00 brown on green. Wild Turkeys. Design size  $44\frac{1}{2}$  x 23 mm. Brown serial number.

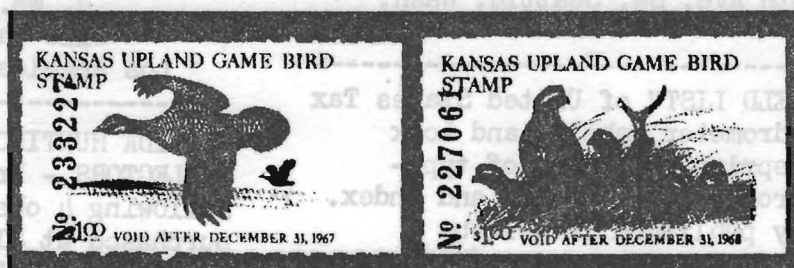
1964 \$1.00 Blue on white. Kansas state seal, buck mule deer, cock pheasant, bob white, and bass leaping for insect. Overall size approx 45 x 23 mm. Red serial number.



1965 \$1.00 brown on white. Bob white quail in flight. Overall size approx 45 x 23 mm. Red serial number.

1966 \$1.00 brown on white. Hunter, dog and flushing cock pheasant. Overall size approx 45 x 23 mm. Red serial number.



Upland Game Bird Hunting Stamps

1967 \$1.00 brown on white. Prairie chickens in flight. Overall size approx 50 x 23 mm. Red serial number.

1963 \$1.00 reddish brown on white. Covey of bob white quail. Overall size approx 50 x 23 mm. Blue serial number.

CONSTANT VARIETY ON NEW JERSEY CIGARETTE - Harold Effner reports that on June 4, 1963, the New Jersey cigarette tax rate was increased from 11¢ to 14¢. For meter impressions, the current color of orange will be replaced by purple. As less than 1% of the total stamps used are decalcomania stamps, past issues will continue in use but be sold at a higher price.

The 14¢ stamp, for packages of 20, is the same as the previous 11¢ stamp. This is in black. The 35¢ stamp is of the same design in brown. Although used on packages of 50, it also has the number 20 appearing four times on each stamp. Before the tax increase, it had a value of 27½¢.

The dark red stamps, which show a value of only 1½¢, is used on packages of 10. Formerly sold at 5½¢, its actual tax value is now 7¢. What seems to be a constant variety has been discovered by Mr. Effner. We will attempt to show this with a sketch. Two of the vertical lines on either side of the design above "CIGARETTE TAX" have been omitted on the upper left and lower right stamps in each pane of 10.

Mr. Effner will supply these decal stamps to collectors at current face value (7¢ red, 14¢ black, 35¢ brown). He also has the current 2¢ decal used in Atlantic City. Enclose a self-addressed, stamped envelope if you wish to take advantage of this offer. See ad.

||||| |||||  
CIGARETTE TAX  
Normal



||||| |||||  
CIGARETTE TAX  
Variety

WYOMING EGG - White negative lettering on blue background, die cut, 31½ mm. diameter. This appears to have pressure sensitive adhesive.



ADVERTISING: 2¢ per word, 3 insertions for price of 2, 5 for price of 3. Send copy and payment to David C. Strock, 4109 - 25th Ave. SW, Seattle, Wash. 98106

"SPRINGFIELD LIST" of United States Tax Paid, Hydrometer Labels, and Lock Seals. Reprint (by means of type-written process). 45 pages and index. Originally published in 1912 by Bartlett and Norton. Price \$2.00 post paid.

DAVID C. STROCK  
4109 - 25th Avenue S.W.  
Seattle, Washington 98106

WILL BUY, SELL or TRADE FISHING AND HUNTING STAMPS. Also the INTANGIBLES.

A. SODERLING  
19 N. Clark St.  
Chicago, Ill. 60602

UNUSUAL REVENUE/SIDELINES HANDBOOKS. Price lists & important research on USIR, State tax issues, Taxpays, foreign revenues and unusual sidelines. Introductory subscription only \$5.00 yr. Issued quarterly, \$2.00 each.

PHILATELIC SIDELINES HANDBOOKS  
2116 Oak Glen Pl.  
Los Angeles, Calif. 90039

WANTED - REVENUES - TAX PAIDS - REVENUE STAMPED PAPER OF - THE U.S. POSSESSIONS Before, during and since U.S. Administration. Philippines; Puerto Rico; U.S. Virgin Islands; Vera Cruz, Mexico, during U.S. 1914 Occupation; Hawaii and Alaska. Free of Tax Cigarette Labels. Literature on Entire World's Revenues.

ROBERT H. SHELLHAMER  
2364 Crestview Road  
Pittsburgh, Pa. 15216

YOUR SRS NUMBER IS WORTH \$1 ON YOUR FIRST APPROVALS!! - Let us know your desires.

HUBBARD'S CUPBOARD  
17 W. San Fernando  
San Jose, Cal. 95113

WANTED TO BUY - REVENUES & SIDELINES Collections, Job Lots, Rarities. Describe.

R. WM. LARSEN  
2116 Oak Glen Pl.  
Los Angeles, Calif. 90039

FLORIDA HUNTING STAMPS AVAILABLE TO COLLECTORS - Mr. Vanderford says the following 4 obsolete stamps can be purchased at \$1 each:

1966-67 \$2.50 Under-age Hunting  
1967-68 \$2.50 Under-age Hunting  
1966-67 \$5.00 Adult Hunting  
1967-68 \$5.00 Adult Hunting

Orders, accompanied by payment and a self-addressed stamped envelope, should be sent Florida Game and Fish Commission, 620 South Meridian St. Tallahassee, Florida 32304.

The "Under-age" stamps are a new discovery which were omitted from Van's Handbook. Also the \$5 1967-68 \$5 stamp has different rouletting.

NEW JERSEY CIGARETTE DECALS at face value + stamped envelope. 7¢ red, 14¢ black, 35¢ brown, 2¢ Atlantic City. Harold Effner, 210 Eastern Way, Rutherford, N. J. 07070

ARKANSAS EGG STAMPS - These are found printed on the cartons of at least two chain groceries. The following varieties are found on eggs distributed by Safeway Stores. All are similar to the paper stamp illustrated in Newsletter No. 60.

Type I - "Egg Inspection" longer than "Arkansas"; stamp  $36\frac{1}{2} \times 16\frac{1}{2}$  mm.

Grade A Large - light blue

Type II -  $35 \times 16$  mm; second line shorter than first.

Grade A Extra Large - Black

Grade A Large - blue

Grade A Medium - red

Grade A Small - green

Type III - much smaller,  $21 \times 10\frac{1}{2}$  mm.

Grade A Medium - red

Grade A Small - green

